

NUUO CT-8000IP - Quick Start Guide

LED Indicator

Function	LED Status	Remark
Power Status (front)	■ Power-on: blue ■ Power-off: dark	
HDD Status x 8 (front; HDD Tray)	■ Power(down): blue ■ Access(up): blue with blinking ■ No disk: dark	1) 2 LED for each disk tray
Ethernet Status	■ Link status indicator 1. Linking: blue 2. Accessing: blue with blinking 3. No linking: dark	1) 1 LED for LAN1 status; 1 LED for LAN2 status 2) Blinking, according to the access rate

Installation

Step 1: Unpack the Unit

This package contains the following items:

The server unit, Quick Start Guide, screws for disk drives, key, power cord, warranty card and Mainconsole Installation CD.

Step 2: Connect to the Network

Step 3: Connect the Power

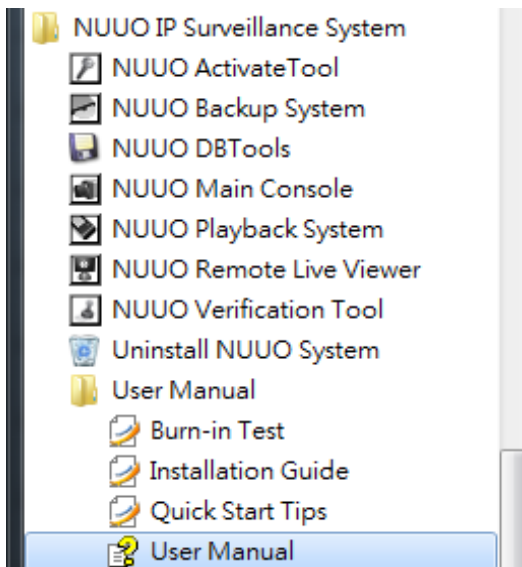
Press the power button once connecting the power.

Step 4: Power on the Unit

Start to run Windows and Mainconsole

Step 5: Run up Mainconsole

Refer Mainconsole user manual as below location, to add IP camera, configure recording schedule, smart guard and etc.



Step 6: Activate Mainconsole license per below process

License Activation

Activation Online

- Step 1: Execute License Manager Tool in Mainconsole General Setting menu.
- Step 2: Select online as Activate type.
- Step 3: Input the SN (Serial number) or Import SN file, and then Click Activate button.
- Step 4: Restart Mainconsole if activation is successful.

Activation Offline

- Step 1: Execute License Manager Tool in Mainconsole General Setting menu.
- Step 2: Select offline as Activate type.
- Step 3: Click Export offline pack. Please note this license will bind with hardware General Settings and it is not recommended to register with removable network devices.
- Step 4: Save Request file, and then take it to another PC that is connected to the Internet.
- Step 5: Execute OffLineTool.exe in the other PC. Input the SN (Serial number) or Import SN file, and then Click Activate button.
- Step 6: Save License file, and then take it to original NVR system.
- Step 7: Open License Manager Tool again, select Import offline license, then click Import button to activate.
- Step 8: Restart Mainconsole if activation is successful.

License Transfer

Transfer Online

- Step 1: Open License Manager Tool.
- Step 2: Select Transfer Tab, and then check Online as Transfer type.
- Step 3: Select SN and Click Transfer button.
- Step 4: Restart Mainconsole if transfer is successful.

Transfer Offline

- Step 1: Open License Manager Tool.
- Step 2: Select Transfer Tab, and then check Offline as Transfer type.
- Step 3: Select SN, and then click Transfer button to transfer SN.
- Step 4: Save Request file. Restart Mainconsole if transfer is successful..
- Step 5: Copy request file to another PC connected to internet.
- Step 6: Execute OffLineTool.exe in another PC, check Transfer SN and click Transfer to send request file to license server.

Note: User needs to copy request file to another PC and send it to license server, otherwise the SN can't be re-activated again!